

# FOR LEASE

## ASIA PACIFIC CENTRE OFFICE LEASING OPPORTUNITY



### PROPERTY FACTS

ADDRESS	100 4th Street SW
MARKET	Calgary, Alberta
TOTAL BUILDING SIZE	87,687 SF
NUMBER OF FLOORS	10
PARKING	Underground and street

For more information, please contact :

#### DALE COUPRIE

Senior Leasing Agent

Cell : (403) 852 4448 Fax : (403) 228 4439

[dcouprie@bowriverleasing.com](mailto:dcouprie@bowriverleasing.com)

BOW RIVER PROPERTY MANAGEMENT AND LEASING

B250 2210, 2nd Street, SW

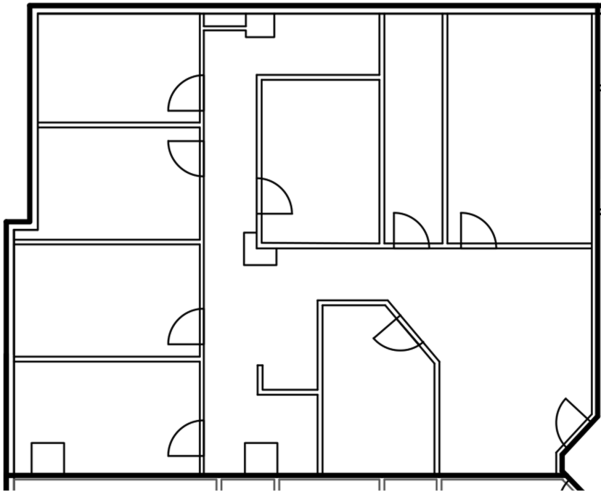
Calgary, AB. T2S 3C3

<http://lihinimedia.com>

518

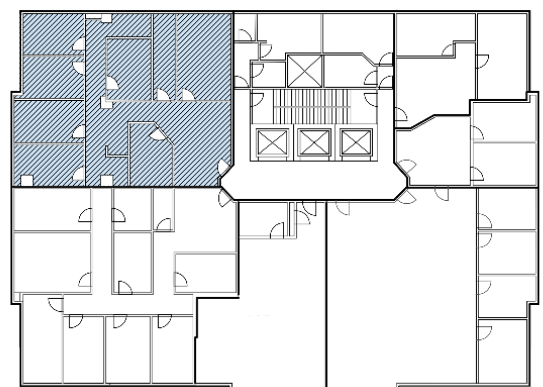
100 4 Avenue SW, Calgary AB

**FOR LEASE**  
ASIA PACIFIC CENTRE  
OFFICE LEASING OPPORTUNITY



**SUITE COMMENTS**

- \* Lots of glass.
- \* Storage area.
- \* Open kitchen area.
- \* Available concurrently with suite 510 for nearly 5000 square feet.
- \* Photocopier vestibule
- \* Storage areas
- \* Board room.
- \* view : Downtown
- \* Board room
- \* Storage
- \* Reception area
- \* Kitchen area
- \* Sink(s)
- \* Server room
- \* Telephone hub
- \* Data hub
- \* Furniture available
- \* 2473 sf
- \* 5 Floor



KEY PLAN

For more information, please contact :

**DALE COUPRIE**

Senior Leasing Agent

Cell : (403) 852 4448 Fax : (403) 228 4439

dcouprie@bowriverleasing.com

BOW RIVER PROPERTY MANAGEMENT AND LEASING

B250 2210, 2nd Street, SW

Calgary, AB. T2S 3C3

<http://lihinimedia.com>