

# FOR LEASE

## ASIA PACIFIC CENTRE OFFICE LEASING OPPORTUNITY



### PROPERTY FACTS

ADDRESS	100 4th Street SW
MARKET	Calgary, Alberta
TOTAL BUILDING SIZE	87,687 SF
NUMBER OF FLOORS	10
PARKING	Underground and street

For more information, please contact :

**DALE COUPRIE**

Senior Leasing Agent

Cell : (403) 852 4448 Fax : (403) 228 4439

[dcouprie@bowriverleasing.com](mailto:dcouprie@bowriverleasing.com)

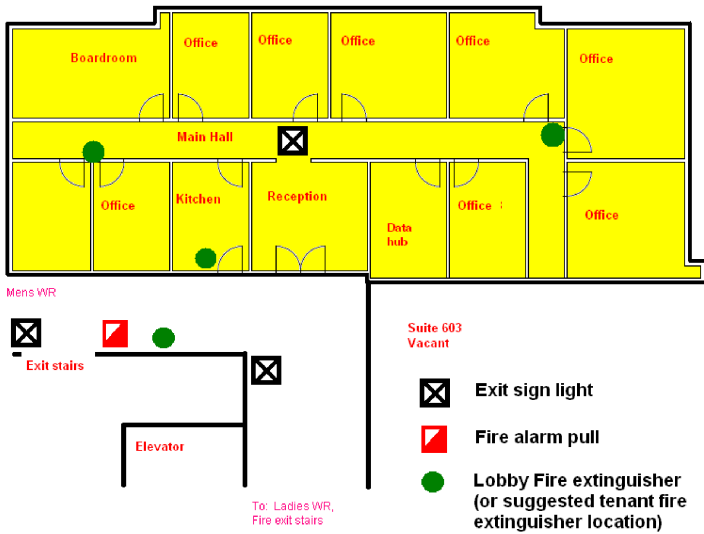
BOW RIVER PROPERTY MANAGEMENT AND LEASING

B250 2210, 2nd Street, SW

Calgary, AB. T2S 3C3

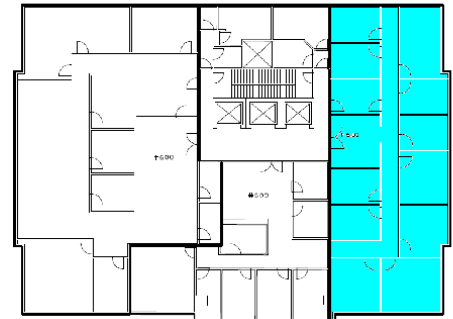
<http://lihinimedia.com>

**FOR LEASE**  
**ASIA PACIFIC CENTRE**  
**OFFICE LEASING OPPORTUNITY**



**SUITE COMMENTS**

- \* This suite features a reception area, kitchen, and 11 office-type rooms of various sizes. More than one room in this suite could be configured as a boardroom.
- \* Neat coloring.
- \* The space features one room configured as a data hub. It is ready for a server environment.
- \* 13 rooms
- \* view : River
- \* Board room
- \* Reception area
- \* Kitchen area
- \* Sink(s)
- \* Server room
- \* Data hub
- \* 3431 sf
- \* 6 Floor



KEY PLAN

For more information, please contact :

**DALE COUPRIE**

Senior Leasing Agent

Cell : (403) 852 4448 Fax : (403) 228 4439

dcouprie@bowriverleasing.com

BOW RIVER PROPERTY MANAGEMENT AND LEASING

B250 2210, 2nd Street, SW

Calgary, AB. T2S 3C3

<http://lihinimedia.com>