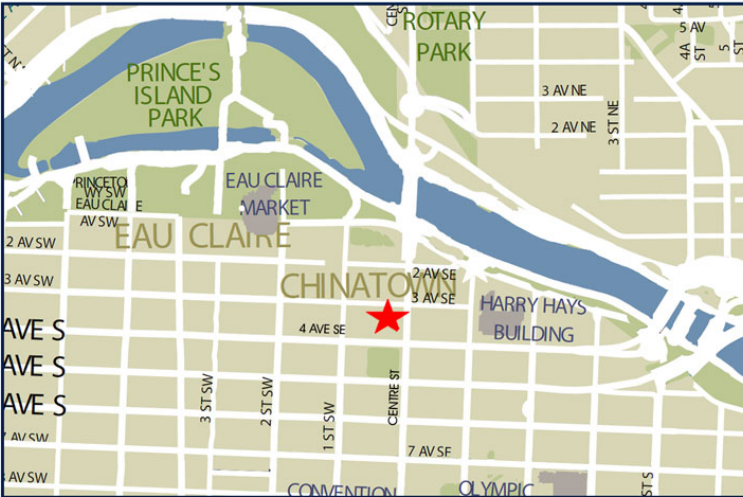


# FOR LEASE

## ASIA PACIFIC CENTRE OFFICE LEASING OPPORTUNITY



### PROPERTY FACTS

ADDRESS	100 4th Street SW
MARKET	Calgary, Alberta
TOTAL BUILDING SIZE	87,687 SF
NUMBER OF FLOORS	10
PARKING	Underground and street

For more information, please contact :

#### DALE COUPRIE

Senior Leasing Agent

Cell : (403) 852 4448 Fax : (403) 228 4439

[dcouprie@bowriverleasing.com](mailto:dcouprie@bowriverleasing.com)

BOW RIVER PROPERTY MANAGEMENT AND LEASING

B250 2210, 2nd Street, SW

Calgary, AB. T2S 3C3

<http://lihinimedia.com>

1000

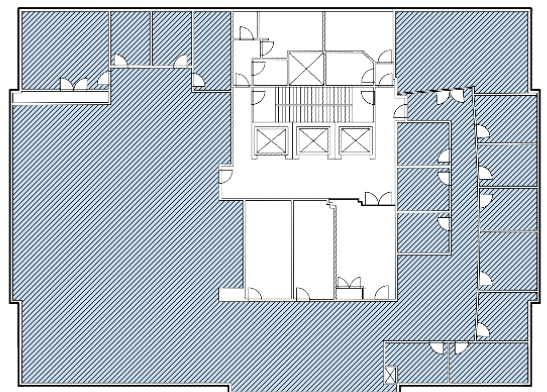
100 4 Avenue SW, Calgary AB

**FOR LEASE**  
ASIA PACIFIC CENTRE  
OFFICE LEASING OPPORTUNITY



### SUITE COMMENTS

- \* Take your business to the next level with this floor layout. The space includes 10 offices and cubicle space for approximately 48 workers. The reception area includes a glass door entrance.
- \* Secure your work with the existing Lenel card access system or choose to integrate with the existing building system.
- \* The server room includes infrastructure to install a water-based cooling solution.
- \* Telephones and a telephone switch are available.
- \* The north offices include a partial river view and a view of the Center Street Bridge.
- \* This space is available concurrently with the 9th floor for 20,600 square feet.
- \* 17 rooms
- \* view : Downtown
- \* Board room
- \* Storage
- \* Reception area
- \* Kitchen area
- \* Sink(s)
- \* Open space
- \* Server room
- \* Telephone hub
- \* Data hub
- \* Furniture available
- \* 10251 sf
- \* 10 Floor



KEY PLAN

For more information, please contact :

**DALE COUPRIE**

Senior Leasing Agent

Cell : (403) 852 4448 Fax : (403) 228 4439

dcoupr@bowriverleasing.com

BOW RIVER PROPERTY MANAGEMENT AND LEASING

B250 2210, 2nd Street, SW

Calgary, AB. T2S 3C3

<http://lihinimedia.com>