

FOR LEASE

ASIA PACIFIC CENTRE OFFICE LEASING OPPORTUNITY



PROPERTY FACTS

ADDRESS	100 4th Street SW
MARKET	Calgary, Alberta
TOTAL BUILDING SIZE	87,687 SF
NUMBER OF FLOORS	10
PARKING	Underground and street

For more information, please contact :

DALE COUPRIE

Senior Leasing Agent

Cell : (403) 852 4448 Fax : (403) 228 4439

dcouprie@bowriverleasing.com

BOW RIVER PROPERTY MANAGEMENT AND LEASING

B250 2210, 2nd Street, SW

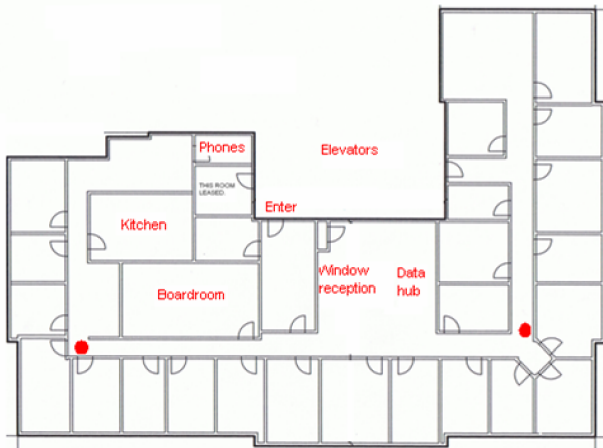
Calgary, AB. T2S 3C3

<http://lihinimedia.com>

701

100 4 Avenue SW, Calgary AB

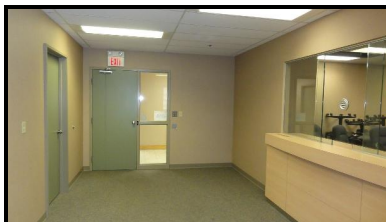
FOR LEASE
ASIA PACIFIC CENTRE
OFFICE LEASING OPPORTUNITY



● Fire alarm horn

SUITE COMMENTS

- * This nearly full-floor configuration is an office intensive configuration with a total of 23 offices. The place also features a boardroom, kitchen and a hybrid reception/hub area. Wall covering and in-office fire alarm audibles complete this unique space.
- * The space has infrastructure and wiring for a tenant-installed security and access control system with smart key readers at each entrance.
- * 27 rooms
- * view : Downtown
- * Board room
- * Storage
- * Reception area
- * Kitchen area
- * Sink(s)
- * Server room
- * Telephone hub
- * Data hub
- * Furniture available
- * 8605 sf
- * 7 Floor



For more information, please contact :

DALE COUPRIE

Senior Leasing Agent

Cell : (403) 852 4448 Fax : (403) 228 4439

dcouprie@bowriverleasing.com

BOW RIVER PROPERTY MANAGEMENT AND LEASING

B250 2210, 2nd Street, SW

Calgary, AB. T2S 3C3

<http://lihinimedia.com>