

# FOR LEASE

## ASIA PACIFIC CENTRE OFFICE LEASING OPPORTUNITY



### PROPERTY FACTS

ADDRESS	100 4th Street SW
MARKET	Calgary, Alberta
TOTAL BUILDING SIZE	87,687 SF
NUMBER OF FLOORS	10
PARKING	Underground and street

For more information, please contact :

#### DALE COUPRIE

Senior Leasing Agent

Cell : (403) 852 4448 Fax : (403) 228 4439

[dcouprie@bowriverleasing.com](mailto:dcouprie@bowriverleasing.com)

BOW RIVER PROPERTY MANAGEMENT AND LEASING

B250 2210, 2nd Street, SW

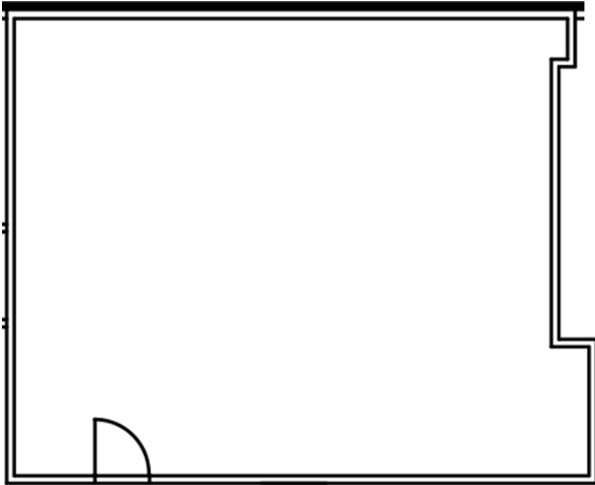
Calgary, AB. T2S 3C3

<http://lihinimedia.com>

304

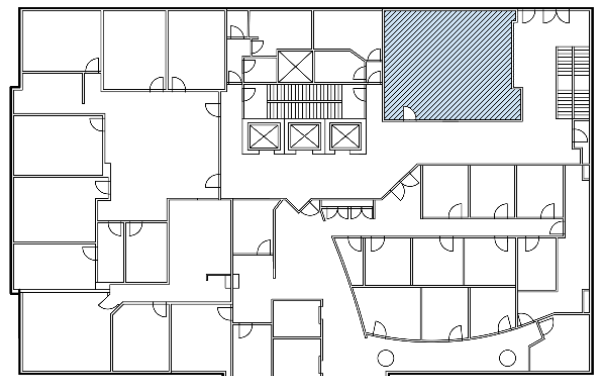
100 4 Avenue SW, Calgary AB

**FOR LEASE**  
ASIA PACIFIC CENTRE  
OFFICE LEASING OPPORTUNITY



### SUITE COMMENTS

- \* This Plus-15 front space is ideal for a small business.
- \* The current configuration features an open concept with a glass partition.
- \* Plumbing is available for a sink in the back left corner.
- \* New vinyl plank flooring. Available cupboards along west wall.
- \* Storage
- \* Reception area
- \* Sink(s)
- \* Open space
- \* Furniture available
- \* 940 sf
- \* 3 Floor



KEY PLAN

For more information, please contact :

**DALE COUPRIE**

*Senior Leasing Agent*

Cell : (403) 852 4448 Fax : (403) 228 4439

[dcoupric@bowriverleasing.com](mailto:dcoupric@bowriverleasing.com)

**BOW RIVER PROPERTY MANAGEMENT AND LEASING**

B250 2210, 2nd Street, SW

Calgary, AB. T2S 3C3

<http://lihinimedia.com>