

# FOR LEASE

## ASIA PACIFIC CENTRE OFFICE LEASING OPPORTUNITY



### PROPERTY FACTS

|                     |                        |
|---------------------|------------------------|
| ADDRESS             | 100 4th Street SW      |
| MARKET              | Calgary, Alberta       |
| TOTAL BUILDING SIZE | 87,687 SF              |
| NUMBER OF FLOORS    | 10                     |
| PARKING             | Underground and street |

For more information, please contact :

#### DALE COUPRIE

Senior Leasing Agent

Cell : (403) 852 4448 Fax : (403) 228 4439

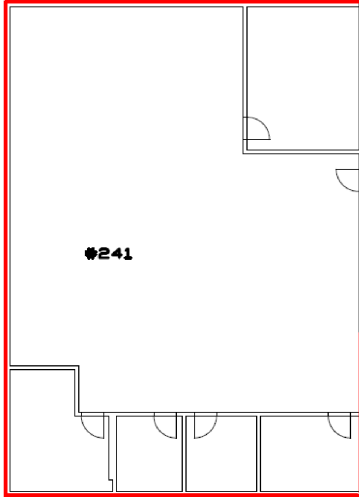
[dcouprie@bowriverleasing.com](mailto:dcouprie@bowriverleasing.com)

BOW RIVER PROPERTY MANAGEMENT AND LEASING

B250 2210, 2nd Street, SW

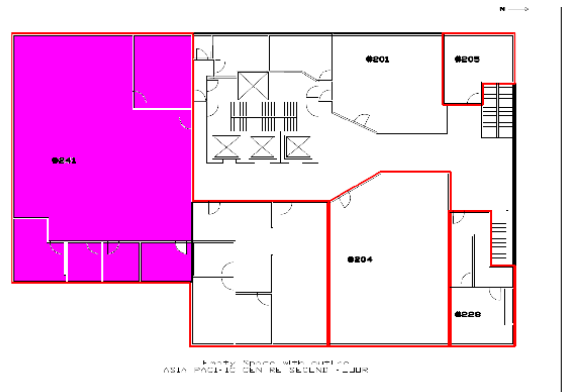
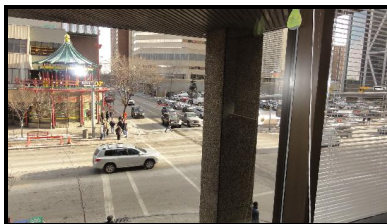
Calgary, AB. T2S 3C3

<http://lihinimedia.com>



**SUITE COMMENTS**

- \* This suite features an open area. There are also four offices with glass walls along the east side and a kitchen area.
- \* Parts for about a dozen cubicles are available.
- \* 6 rooms
- \* view : Downtown
- \* Storage
- \* Kitchen area
- \* Sink(s)
- \* Open space
- \* Data hub
- \* Furniture available
- \* 3885 sf
- \* 2 Floor



KEY PLAN

For more information, please contact :  
**DALE COUPRIE**  
*Senior Leasing Agent*  
 Cell : (403) 852 4448 Fax : (403) 228 4439  
[dcoupric@bowriverleasing.com](mailto:dcoupric@bowriverleasing.com)

**BOW RIVER PROPERTY MANAGEMENT AND LEASING**  
 B250 2210, 2nd Street, SW  
 Calgary, AB. T2S 3C3  
<http://lihinimedia.com>