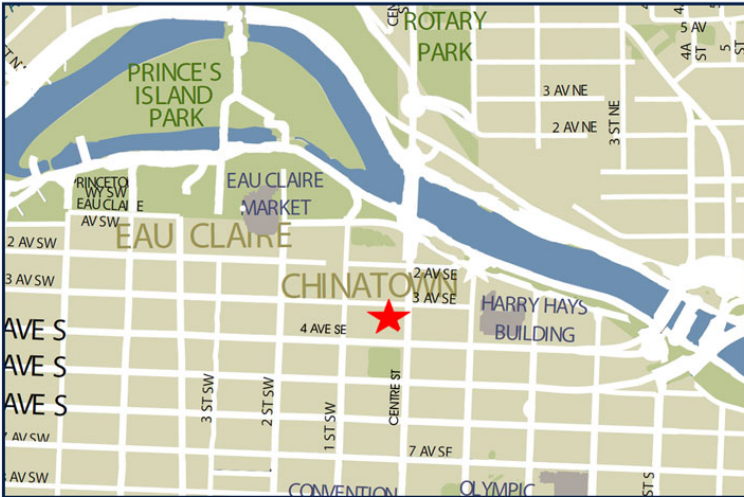


FOR LEASE

ASIA PACIFIC CENTRE OFFICE LEASING OPPORTUNITY



PROPERTY FACTS

ADDRESS	100 4th Street SW
MARKET	Calgary, Alberta
TOTAL BUILDING SIZE	87,687 SF
NUMBER OF FLOORS	10
PARKING	Underground and street

For more information, please contact :

DALE COUPRIE

Senior Leasing Agent

Cell : (403) 852 4448 Fax : (403) 228 4439

dcoutrie@bowriverleasing.com

BOW RIVER PROPERTY MANAGEMENT AND LEASING

B250 2210, 2nd Street, SW

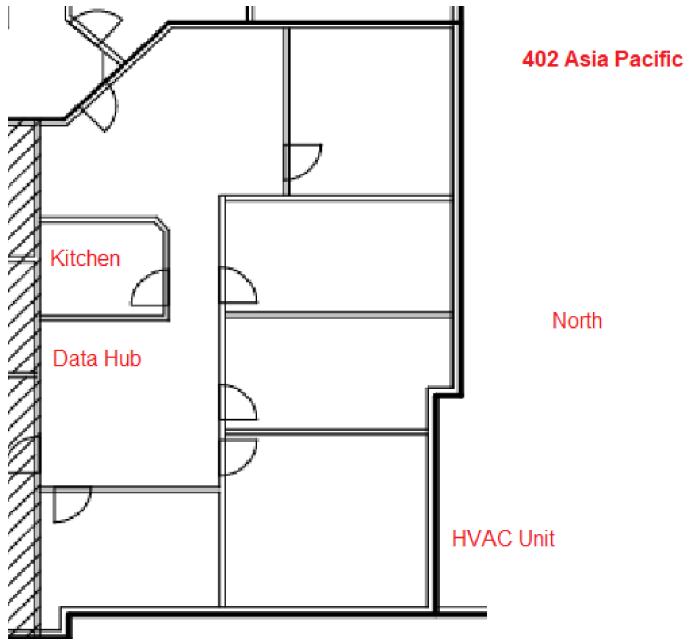
Calgary, AB. T2S 3C3

<http://lihinimedia.com>

402

100 4 Avenue SW, Calgary AB

FOR LEASE
ASIA PACIFIC CENTRE
OFFICE LEASING OPPORTUNITY



SUITE COMMENTS

- * Enjoy the wonderful views on this six-room suite. Features one kitchenette and five rooms including one boardroom-capable room.
- * 7 rooms
- * view : Road
- * Board room
- * Reception area
- * Kitchen area
- * Sink(s)
- * Data hub
- * Furniture available
- * 1825 sf
- * Ground Floor



For more information, please contact :

DALE COUPRIE

Senior Leasing Agent

Cell : (403) 852 4448 Fax : (403) 228 4439

dcouprie@bowriverleasing.com

BOW RIVER PROPERTY MANAGEMENT AND LEASING

B250 2210, 2nd Street, SW

Calgary, AB. T2S 3C3

<http://lihinimedia.com>